

HenderCare 12 days of Key Word Sign 2021



Christmas (Santa)

Place cupped dominant hand under chin, palm up. Move formation down in small vertical circles.



Tree

Place non-dominant hand, palm down, under upright dominant forearm, wriggle fingers of dominant hand.



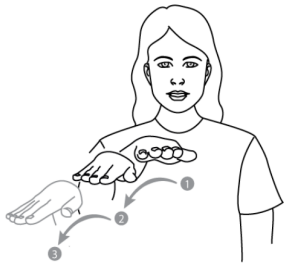
Lights

Flick fingernails of dominant hand off ball of dominant thumb while moving hand diagonally down from head height. Use appropriate positioning for this sign.



Candles

Place open dominant hand in front of body, fingers spread, palm facing in, fingers pointing upwards. Place extended non-dominant index finger at base of dominant hand. Wriggle fingers of dominant hand.



Children

Move open dominant hand, palm down, to the side in a bouncing movement. Move hand down as it bounces.



Happy

Clap heels of open cupped hands together twice, hands moving in small outward circles.



Family

Extend index and middle fingers of both hands and place dominant formation on top of non-dominant formation at chest height, palms facing away from body. Simultaneously move both hands around in an arc to finish with palms facing body and non-dominant fingers on top of dominant fingers.



Food

Close dominant fingertips onto ball of thumb. Tap formation on chin, twice.



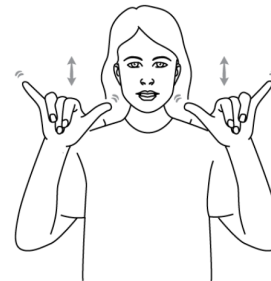
Cake

Bounce tips of cupped dominant hand, fingers slightly spread, on back of non-dominant hand, twice.



Holiday

Open both hands, hold palms away from body – simultaneously move each hand in outwards circles, twice.



Party

Extend thumb and little fingers of both hands and place at side of head. Simultaneously wriggle formation as it moves up from body.



Presents

Open both hands, palms facing body and roll hands around each other. (Natural gesture – gift wrapping).